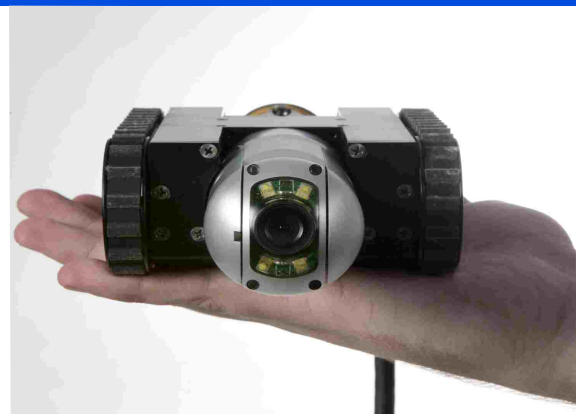


The Evolution of Pipe Inspection

Inuktun technology lets you... see it for yourself.



The Nanomag's magnetic design allows it to travel vertically, horizontally and even upside down on metal surfaces. The system is extremely effective in areas too small or hazardous for human inspection ... see it for yourself.

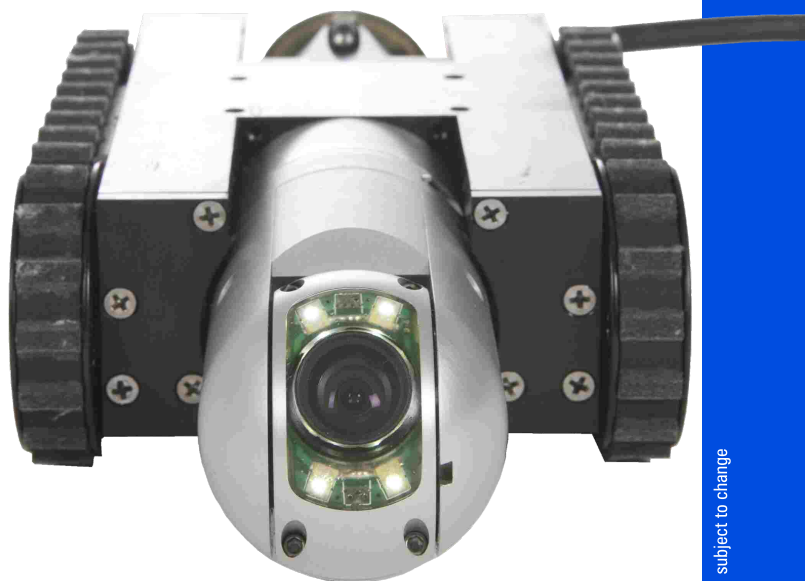
APPLICATIONS

- Lift shaft inspection
- Reactor head inspection
- Pressure vessel inspection
- Tank inspection
- Pipe inspection
- Corrosion evaluation
- Steel surface inspection

BENEFITS

- High quality images
- Miniature size
- Light weight
- Strong magnetic pull to hold vehicle securely
- Operates horizontally and vertically
- Precise steering controls

For more information on advanced pipe inspection systems contact Inuktun today.



INUKTUN
CRAFTSMANSHIP IN HIGH TECHNOLOGY

see it for yourself.

Phone: +44 (0)1224 200125
Fax+44 (0)1224 515010
Email: sales@inuktun-europe.com
www.inuktun-europe.com

NANOMAG

Vehicle

Speed 0-5'+/0-1.5m+ per minute (optional higher speed available)
 Transporter Inuktun Nano Trac Units
 Tether Cable 100' /30m
 Weight 5lbs /2.27kg
 Size 4.15"W x 7.6"L x 1.9"H (105mm x 193mm x 49mm)

Camera

FRONT CAMERA

Type Inuktun Spectrum 45™ pan & tilt camera
 Material Aluminum
 Pick-up-element Colour 1/4" CMOS
 Sensitivity 1.0lux
 Resolution 420 TV Lines
 Focus Manual (Remote)
 Iris Auto
 Lights 4 High intensity LEDs

REAR CAMERA

Type Crystal Cam
 Pick-up-element Colour 1/4" CCD
 Resolution 400 TV Lines
 Iris Auto-Electronic
 Sensitivity 1.0lux
 Lights 12 High intensity LEDs

Operating Environment

Temperature 0°-50°C (32°-122°F)

Control System

Power 88-264 VAC 50 /60Hz
 Chassis 19" RACK MOUNT
 Dimensions 19"W x 12"L x 5.75"H (476mm x 145mm x 304mm)
 Options Pelican case



Inuktun Europe Ltd.
www.inuktun-europe.com
 Phone: +44 (0)1224 200125, Fax+44 (0)1224 515010
 Email: sales@inuktun-europe.com

