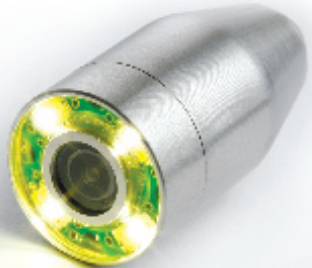


Advanced Underwater Inspection Technologies

Inuktun technology lets you... see it for yourself.



INUKTUN
CRAFTSMANSHIP IN HIGH TECHNOLOGY

see it for yourself.

At only 7/8" (22mm) diameter, the Mini Crystal Cam allows inspection in extremely small pipes and confined spaces. The high quality color camera offers excellent image quality and has built in LED lighting. Combining an external Stainless Steel housing and internal potted electronics makes the camera extremely durable, ideal for operation in the most extreme conditions. With a depth rating of 3,300 feet (1,000 meters), the Mini Crystal Cam can go almost everywhere you need it.

APPLICATIONS

- Internal inspection of pipes
- Tank and well inspections
- Confined space inspections
- Drop Camera
- Underwater surveillance
- Wet weather surveillance
- Operator visuals for monitoring equipment and machinery
- ROV's
- Pre-dive inspections

BENEFITS

- Light weight
- Durable
- Impact resistant
- Depth rated to 3,300'/1,000m
- Portable inspection system with optional battery pack for remote operation
- Inexpensive and versatile
- Pre-settable focus
- Can be secured to virtually any surface, including underwater vehicles
- Interchangeable tether length from 100'/30m to 3,300'/1,000m to suit a variety of inspection applications
- Easily fit through small openings

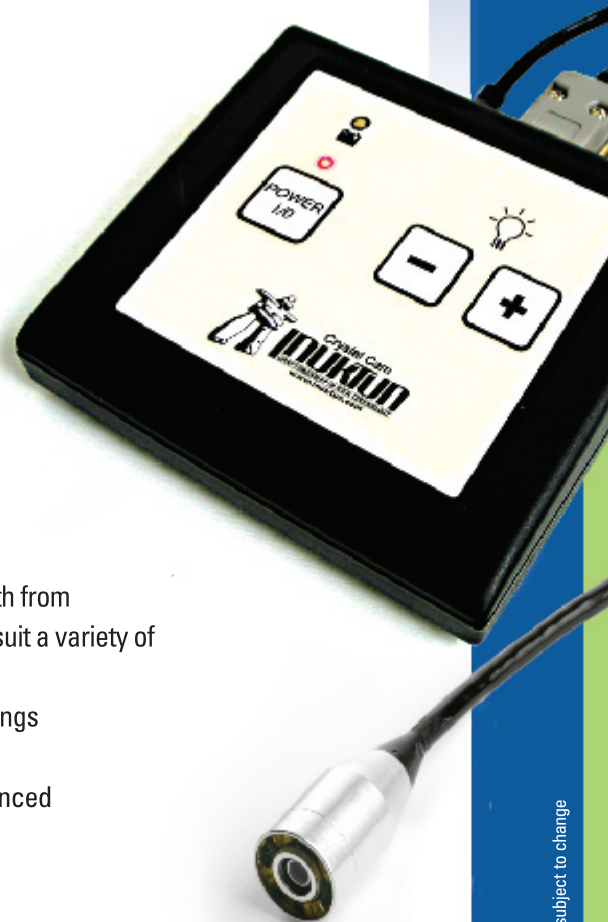
For more information on advanced pipe inspection systems, contact Inuktun today.

CALL 1 877 468 5886

E-MAIL sales@inuktun.com

ONLINE www.inuktun.com

MINI CRYSTAL CAM



Printed in Canada

* Specifications subject to change

Size

Length 2.5" / 63.5mm

Diameter 0.875" / 22mm

Minimum Pipe Diameter 1" / 25mm

Active Controls Power, lights

Lights Variable intensity

Camera

Material Epoxy + Stainless Steel

Image Sensor Color 1/4" CMOS

Sensitivity <1.0 lux

Resolution 420 TV lines

Iris Auto electronic

Lens 3.4mm

Focus Pre-settable focus

HFOV 55° in air, 41° in water

Lights 4 high intensity LED's

Camera Weight 0.2 lbs / 0.09kg

Connector 6 pin (male) Subconn Micro Circular

Option NTSC/PAL

Controls

Active Controls Power, lights

Lights LED, up to 50,000 hours, variable intensity

Video text overlay with keyboard entry

Operating Environment

Temperature 0°-50°C (32°-122°F)

Depth Rating 3,300' / 1000m

Control System

Power 12 VDC (AC adapter included)

Controller Weight 0.5lb / 0.22kg

Dimensions 5.5" x 5" x 1.5"

(14cm x 12.7cm x 3.8cm)

Interface Membrane controller

Tether Cable 100' / 30m Standard

Custom lengths to 3,300' / 1,000m available

Options Pelican Case, Turnkey Controller w/ monitor and battery pack, locking sleeves, digital recorder

Specifications subject to change

